



SA-82-AR



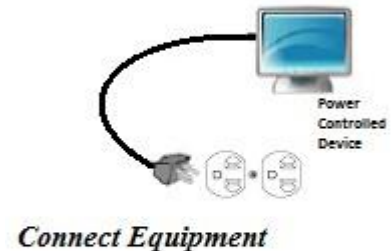
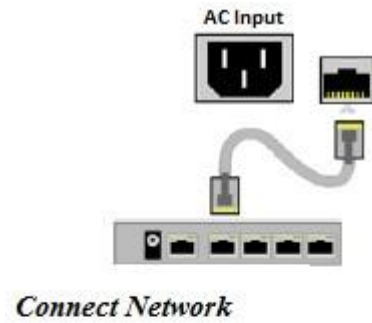
Quick Start Guide

Connections

- 1. Connect Network.** The SA-82-AR supports 10/100 Ethernet using the cable supplied, or other suitable unshielded twisted pair (Cat 5) cabling.
- 2. Connect Powered Equipment.** Connect the device to be powered On and Off to the duplex receptacle located on the rear panel. If the connected equipment has a Power switch, leave it in the On position to allow the SA-82-AR to control the power.

IMPORTANT: Ensure that the total combined load of all controlled devices does not exceed 8 Amps.

- 3. Connect Power Mains.** Connect one end of the supplied power cord to the IEC connector labeled "AC Input", and the other end to a properly grounded AC outlet.

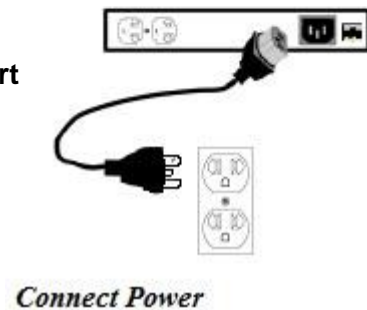


Web Browser Access

Factory Default IP Address is DHCP assigned, but will revert To 192.168.1.254 if no DHCP Server is located.

Factory Default Security Credentials:

Role	Username	Password
Administrator	admin	admin
User	user	user



To access the SA-82-AR from the default IP Address, the PC must be on the same local network (IP address of 192.168.1.*nnn*). If it is not, change the IP address using one of the methods on the following page.

After pointing a web browser to the IP address of the SA-82-AR/, enter the Administrator Username and Password to access the complete Setup features. Entering the User credentials will enable access to only the power control. Once the user is validated, the Control and Status page is displayed.

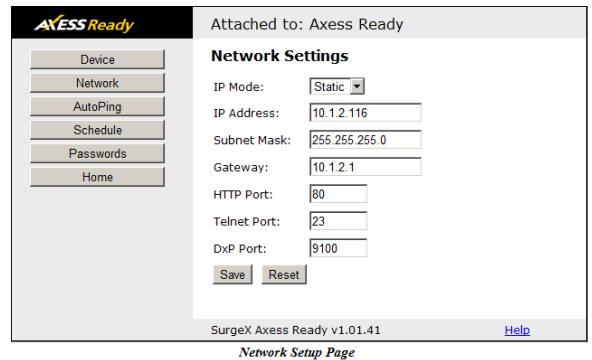
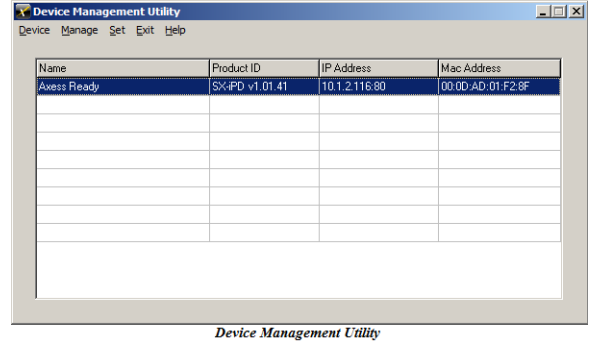
Click on the appropriate button to control the power. During power cycling, the Power Status bar will indicate the temporary status, and will have a blue background. Once the cycle is complete, the status bar will revert to its original condition.

Changing the IP Address

- 1. Device Management Utility (DMU).** Obtain the latest DMU from the SurgeX website at <http://www.surgex.com>. The DMU provides the easiest means to find and configure your SA-82-AR for use. It can discover all SA-82-AR on the local network, display the current IP address of each, and allow the setting of any valid IP address.

The DMU can also be used to return an SA-82-AR to its factory default condition. This may be used to recover an SA-82-AR with a lost password. Highlight a unit in the list and choose menu item Set | Factory Defaults.

Note: Setting the IP address or performing a reset to Factory Defaults can only be performed within the first 2 minutes of powering up the SA-82-AR. The DMU will only work with units on the same local subnet as the PC.



- 2. Web Page Setup - Manual.** From the home page, click Setup, and then Network. Enter the new IP Address, Subnet Mask, and Gateway, and then click Save. Click the Reboot button (or press the reset button next to the System On LED) to restart the SA-82-AR with the new settings.
- 3. Web Page Setup - DHCP.** From the home page, click Setup, and then Network. Change the IP mode from Static to DHCP. Click Save, and then Reboot. The SA-82-AR will automatically obtain its network settings from the DHCP server. Check the server IP/MAC table or use the DMU to obtain the new settings.