

ESP | SurgeX's standard Windows® desktop software for Next Gen and enVision products may be used remotely over the Internet with an ESP | SurgeX Remote Portal product and COM Port Redirection software.

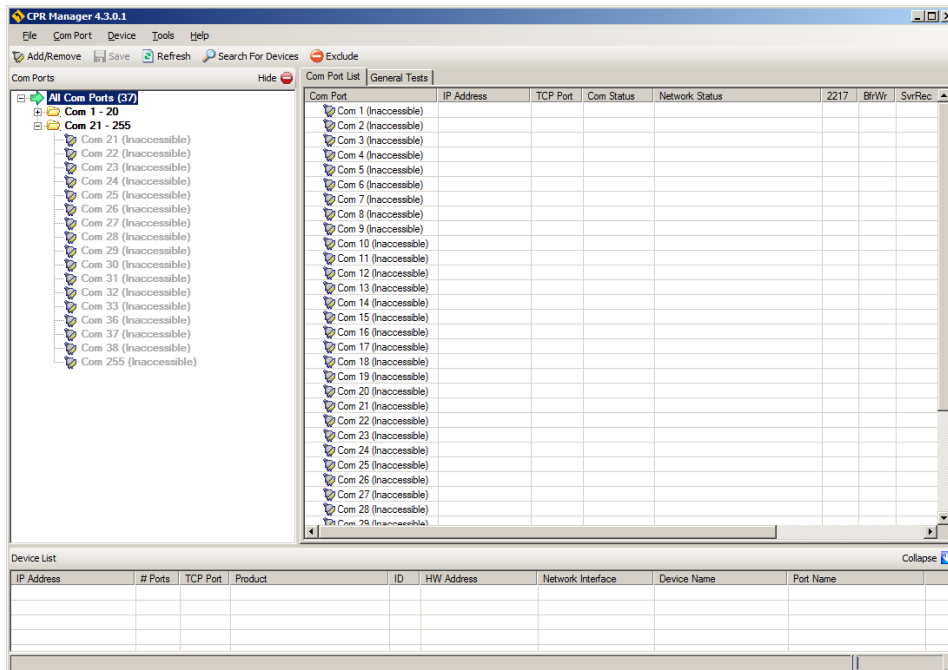
This application note will describe how to use Lantronix® COM Port Redirector software to map “Virtual COM” Ports on a Windows® PC which will be used in place of physical COM Ports with the Next Gen and/or enVision desktop software.

**Remote Site Configuration:**

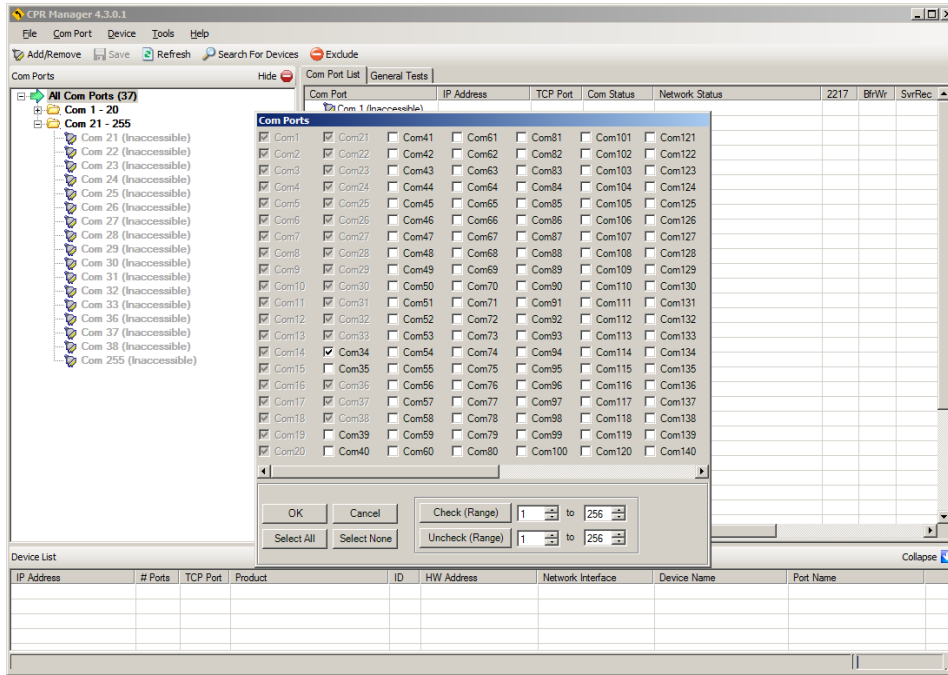
- Install a Next Gen or enVision product following the instructions in their respective user manuals or quick start guides:
  - <http://espsurgex.com/product/nextgen-pcs/>
  - <http://espsurgex.com/product/envision/>
- Install a Remote Portal product attached to the Next Gen or enVision product following the instructions in its user manual or quick start guide:
  - <http://espsurgex.com/product/remote-portal/>
- Configure the Remote Portal for remote access:
  - Static local and external IP Addresses are preferred.
  - Redirect traffic on the following ports through the site’s firewall and router to point to the Remote Portal’s local IP Address:
    - Config Server Port 30718. Required. Cannot be changed.
    - TCP Server Port 10001. Required. May be changed.

**PC Configuration:**

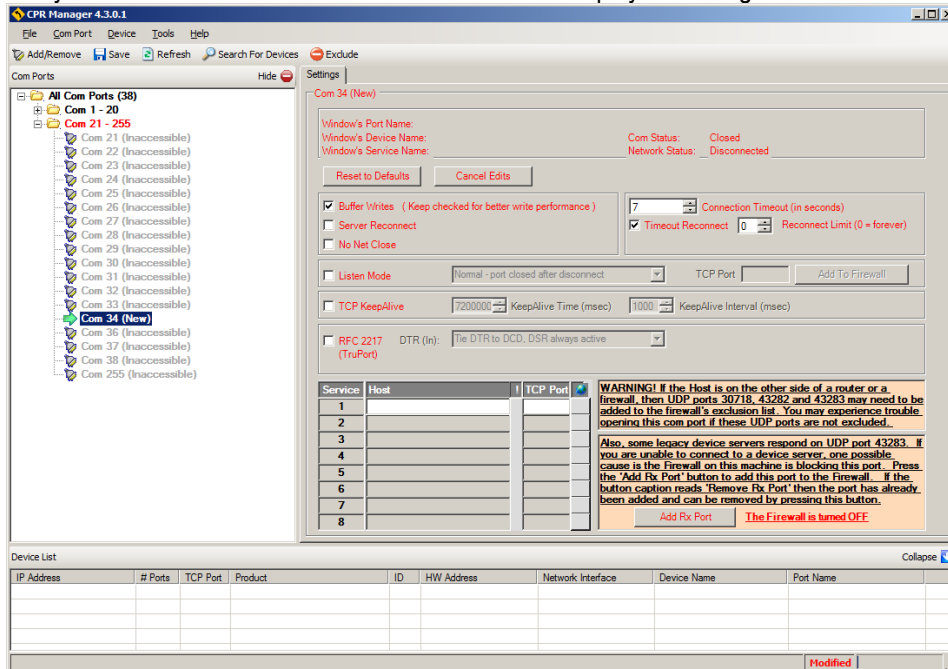
- Download and install the latest version of the ESP Next Gen or enVision desktop software:
  - <http://espsurgex.com/product/nextgen-pcs/>
  - <http://espsurgex.com/product/envision/>
- Download and install the latest version of Lantronix® COM Port Redirector software:
  - <http://www.lantronix.com/device-networking/utilities-tools/com-port-redirector.html>
- Start the CPR Manager interface. COM Ports listed as “(Inaccessible)” are those your PC has previously used for physical serial connections.



- Click the “Add/Remove” button at the top left to add a new COM Port, check the box beside the desired COM Port number, and then click the “OK” button.

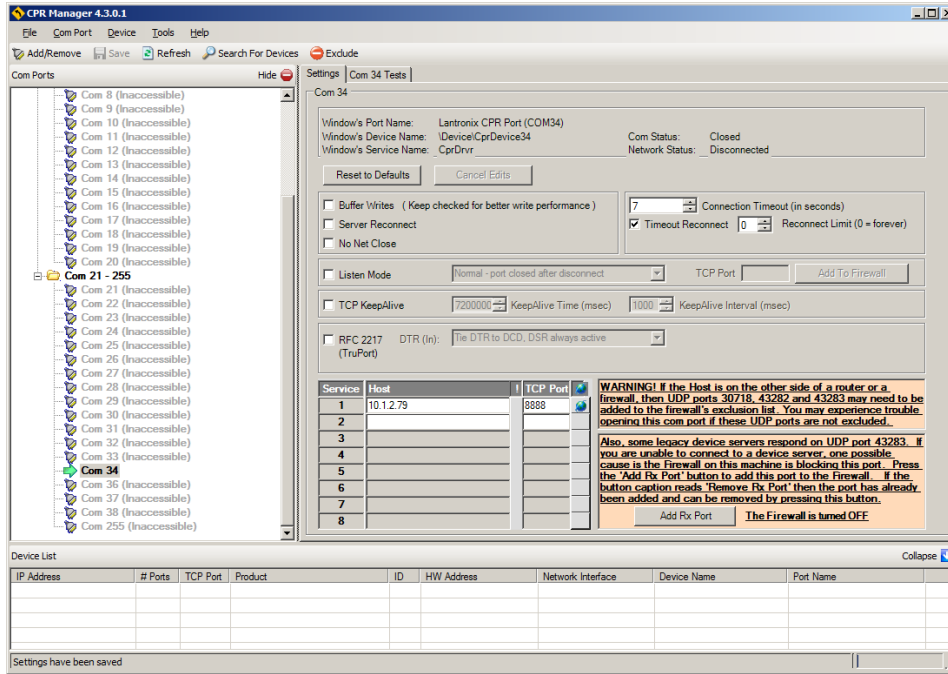


- Find the newly created COM Port in the tree and click on it to display its Settings.



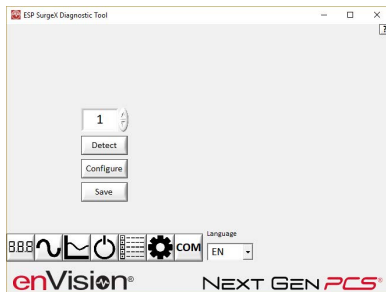
- Uncheck “Buffer Writes” so that “Buffer Writes”, “Server Reconnect”, “No Net Close”, “Listen Mode”, “TCP KeepAlive”, and “RFC 2217 (TruPort)” are all unchecked.
  - In the Service 1 “Host” field, enter the external WAN IP address of the remote site.
  - In the Service 1 “TCP Port” field, enter the TCP Server Port of the Remote Portal at the remote site.

- Press the “Save” button at the top left to save these settings. Once saved, the text color will change from red to black.



**Next Gen/enVision Desktop Software Operation:**

- Start the Next Gen or enVision desktop software and specify the new redirected COM Port set up in the previous section following the instructions in the software user manual:



- Operate the Next Gen or enVision desktop software following the instructions in the software user manual:

